



Portable 100Kwh Type2 To Tesla EV Charger Adapter ,European Standard DC Electric Vehicle Charger Connector

Our Product Introduction

for more products please visit us on evstationcharger.com

Basic Information

- Place of Origin: China
- Brand Name: MINKO
- Certification: CE
- Model Number: Type2 to Tesla DC Adapter(TYPE2-T)
- Minimum Order Quantity: 5 pieces
- Price: negotiation
- Packaging Details: L210xW85xH52 (mm)
- Delivery Time: 8 -10 working days
- Payment Terms: T/T, Western Union, MoneyGram,Paypal,Skrill,Transferwise
- Supply Ability: 1000000 pieces per month

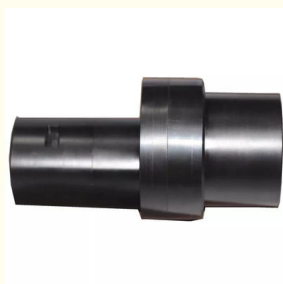


Product Specification

- Housing: POM
- Rated Voltage: DC 500V
- Current: 200A
- Power: 22kW
- Plug Lifespan: >10000 Times
- Protection Class: IP55
- Highlight: 100kwh Tesla Charging Adapter, Tesla Charging Adapter type2, 200a tesla to type 2 adaptor



More Images



Product Description

Portable 100Kwh Type2 to Tesla EV Charger Adapter ,European Standard DC Electric Vehicle Charger Connector

Detailed Description of Type2 to Tesla Charger Adapter

The Type 1 (J1772) to Type 2 (62196-2) adapter allows you to charge your Type 2 car (eg Tesla, Hyundai, Renault, Jaguar, Nissan) from any J1772 charging station. It's rated for 32A charging and has been tested in Australia using our own EVs.

Adapter for electric car to convert your charger from American standard to European standard.

Ideal for families with 2 EVs or plug-in hybrids with different connector types.

EV charger type 1 adapter for type 2 EV: This EV type 1 type 2 charging adapter is suitable for type 2 EVs charging, 16A-32A(max 32A), 1 pound makes it easy to carry.

Compact Type 1 to Type 2 EV charger converter,: Convert your EV charger Type 1 tethered cable plug to a Type 2 EV charge plug. This Electric vehicle adaptor is Designed to charge your Type 2 electric car from Type 1 tethered cable plug.

Type 1 J1772 EV Adapter has Two Sides: one side is J1772 EV male plug which connected to type 1 female EV plug, another side is IEC 62196-2 plug(7pins) connected to your type 2 Electric car.

EV electric car charger adapter cable 16A-32A&EVS Compatible: Suitable for most type 2 electric vehicles from Audi, Porsche, Tesla(EU standard), VW and more.....

Note: this adapter is not compatible with some tesla model car and BMW. Please check wheather you r type 2 car meet IEC62196-2 standard before order.

Specification of Type2 to Tesla Charger Adapter

European standard DC adapter			
Model	TYPE2-T	Certification	CE
Power	UP to 100Kwh	Housing	POM
Current	200A	Pins	Copper,alloy, silver plated
Rated voltage	500V DC	Plug lifespan	>10000 times
Protection class	IP55	Working temperature	-30 ~+85
Insulation resistance	0.7mΩ Max	Warranty	12 months
Product insertion force	45<F<80N		



TYPE2 to TESLA



Tesla charging



Type2 Plug



300A-150A

TYPE2 to TESLA



Tesla charging



Type2 Plug



300A-150A



Gently connect it to a TYPE2 charger
until you hear a “click”



Charging cable safety:

The cable should be kept out of puddles but can be kept outside.

Please remember to use the rubber cover to keep moisture from the connector when not in use. The vehicle will not charge if it senses moisture.

Moisture is the most common issue experienced and will lead to corrosion of the pins, so keep dry.



MINKO (SZ) TECHNOLOGY CO., LIMITED



+8613539872669



yumiko@szminko.com



evstationcharger.com

309 West Lake Industrial Zone, Cuishan Road, Dongxiao Street, Luohu District, SZ